



2019 Hakuba Newsletter

April

Hakuba Village Official Homepage Will Be Renewed in April

Hakuba Village Office Official Website will be renewed for the first time in 10 years. The machine translation into multiple languages will be available besides English. But current English page "Living Guide in Hakuba" will remain. Our new website will be shown on April 1.

For inquiries: General Affairs Division (Hakuba Village Office) TEL: 0261-72-7001

Fees

¥23 per liter

The bill will be sent on a later date by Resident Division of Hakuba Village Office.

For inquiries and requests

☎0261-23-4446 YAMADA CO.,LTD

Business Hours (Reception starts from March 25)

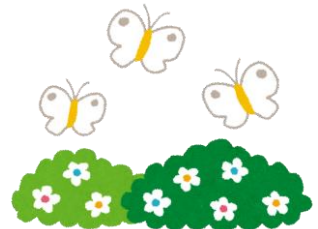
Weekdays 8:00-12:00 and 13:00-15:00

You may leave a message to our answering machine on weekends, public holidays, Obon period and New Year period. ※You should request a pumping service by the end of October if you wish the work to be finished before the end of a year.

Work Execution Date

About a month after you made a request. The first work execution day would be in mid-April.

Request for Wastewater Pumping Service



Subsidies to Reduce Food Waste

Nowadays, the reduction of food waste is a significant issue. Hakuba provides subsidies for those who make efforts to dispose of food waste at home.

★ Waku-waku Compost is suitable for facilities and able to dispose of food waste of 20-30L per day. It needs a bacterium called "Bio Z," available at Resident Div. and volunteer group "Hakuba Earth-tai."

Name	Amount of Subsidy	Remarks
Portable Household Food Waste Disposer	2/3 of the purchasing cost(max. of ¥40,000)	The subsidy will be paid for one product per household in one fiscal year only. Before purchase, please consult Resident Div..
<ul style="list-style-type: none"> Waku-waku Compost (Wood frame compost bin) Plastic Bucket Compost 	2/3 of the purchasing cost(max. of ¥15,000)	Before purchase, please consult Resident Div..
Pakkun (Cardboard box compost)	¥382 per 1 package (You can buy it for ¥271. Without subsidy, it costs ¥653)	Available in A-Corp Hakuba "Hapia"

For inquiries: Resident Division (Hakuba Village Office) TEL: 0261-85-0715

COLUMN



Cherry blossoms are a special flower in Japan. It is a symbolic flower for Japanese culture and has a significant influence on our art, literature, cuisine, etc. For instance, the design of the Olympic torch for 2020 Tokyo will be cherry blossoms' shape. Also, we have many kinds of cherry flavor sweets in spring.

Under the full blossom of cherry, many Japanese have parties called "HANAMI" nationwide.



Calendars of Health and Welfare Service

◆ Health checkup for infant and toddler

Venue: 1/F of Fureai Center

Date	Event	Reception time	Targets (born in)
Apr. 8 (Mon)	Consultation (2-month-old)	9:30~9:45	Feb .2019
Apr. 11(Thu)	Health checkup (18-month-old)	13:00~13:15	Aug. –Sep. 2017
Apr. 18 (Thu)	Health checkup (4-month-old)	9:15~9:30	Nov. 2018
Apr. 18 (Thu)	Health checkup (10-month-old)	9:30~9:45	May 2018
Apr. 19(Fri)	Baby food class	9:45-10:00	Aug. –Sep. 2018

◆ Vaccination

Venue: 1/F of Fureai Center

Date	Event	Reception time	Targets (born in)
Apr. 10	Different types	13:00 ~ 13:30	Notified individually
Apr. 26			

◆ Child raising supporting room <Shien-room>

TEL: 0261-72-3025

Nakayoshi Hiroba
(Friendly Plaza)
Time : 9:30 ~ 12:00

1 year-old Plaza	Every Tue
0 year-old Plaza	Every Wed
2-3 year old Plaza	Every Thu

Free Use
Section

Every Mon • Fri • Sun	9:30 - 12:00
	13:30 - 16:00
Every Tue • Wed • Thu	13:30 - 16:00

Date	Event	Targets	Starting Time
Apr. 8 (Mon)	Resuming services (Free Use Section)	-----	9:30 -
Apr. 9 (Thu)	Nakayoshi Horoba Ichigo group	1 year-old	9:30 -
Apr. 10 (Tue)	Nakayoshi Horoba Hiyoko group	0 year-old	9:30 -
Apr. 11 (Thu)	Nakayoshi Horoba Mikan group	2-3 year-old	9:30 -
Apr. 15 (Mon)	Monday Consultation	-----	10:00 -
	Story Telling	-----	11:00 -

*Please note that Nakayoshi Hiroba and Free Use Section are closed during the period from Mar 25 (Mon) to April 7(Sun) for fiscal year-end clean up (Temporary child care service will be remained normal.)

*Health checkups, vaccinations, Shien-room are provided for the residents who have registered address in Hakuba Village Office

◆ Foreign-language Human Rights Hotline (English)

by Tokyo Legal Affairs Bureau

0570-090-911 (Navi Dial)	Weekdays 9:00 — 12:00, 13:00 — 16:00
---------------------------------	--------------------------------------

◆ Multicultural Living Supporter by ANPI (Association of Nagano Pref. for Internationalization)

Hotline: 026-235-7186 / 090-7710-7446	Weekdays 9:30 — 17:30
Face to face counselling is also available at Nagano Prefectural Office upon appointment.	

◆ Clinic • Hospital on-duty on holiday

Date	Hakuba Otari	Omachi	Ikeda Matsukawa	Dental Clinic (DC)	Pharmacy in Hakuba
Mar. 31(Sun)	Otarimura Clinic	Endo Internal Medicine Clinic	Nishimori Orthopedic Clinic	Miyashita DC	Omachi
Apr. 7(Sun)	Kurita Clinic	Mogamii Orthopedic Clinic	Ota Clinic	Takeda DC	Hakuba Ota
Apr. 14(Sun)	Yokosawa Clinic	Kikuchi Clinic	Herb-no-sato Clinic	Okae DC	Matsukawa Hakuba Apple
Apr. 21(Sun)	Kamishiro Clinic	Ono Clinic	Azumi Hospital	Takeuchi DC	Ikeda Fujinoya
Apr. 28(Sun)	Shintani Clinic	Hirabayashi Clinic	Matsumoto Clinic	Sunada DC	Omachi Fujinoya
Apr. 29(Mon)	Hakuba Clinic	Yokosawa Internal Medicine Clinic	Serizawa Clinic	Azumino DC	Matsukawa Fujinoya
Apr. 30(Tue)	Shintani Clinic	Omachi Municipal General Hospital	Azumi Hospital	Sato DC	Omachi Fujinoya

Detailed schedule with maps and contact no. is available at the village office; or can be downloaded from <http://www.vill.hakuba.lg.jp/>

Matsukawa Bulky Waste and Recyclables Collecting Station Resumes

From April to November, Matsukawa bulky waste and recyclables collecting station will be available in the following schedule. Please refer to the Garbage Sorting Guide (available from our website) for how to sort and recycling charges for the home appliances such as televisions, fridges, washing machines, and air conditioners.



Business hours: 9AM- Noon

The Reference Price of Handling Fee

From FY2019, the bulky waste station will be operated by the garbage collection company directly. The prices shown below are just for your reference. They vary depending on the situation such as the fluctuation of the market price, the revision of consumption tax, etc.

	Day		Day
April	14,28	August	25
May	12,26	September	8,22
June	9,23	October	13,27
July	28	November	10,17,24



Item	Fee	
Metal only. No other materials are to be included. Aluminum window frames · Chairs · Dog cages · Pipes · Generators · Tankless water heaters · Brush cutters · Ladders · Tire chains · Oil tanks · Steel wheels · Steel cabinets	Free of charge	
Thermos · Cushions · Shovels · Tubs · Barrels · Pails · Polyethylene tanks(20L or less) · Cloth-containers · Tires(unicycle, bicycle) Rackets · Clothes irons · Fire extinguishers(emptied) · Electric shavers · Batteries(other than cell batteries) · Cameras · Golf clubs	¥350	
Chairs · Wheelbarrows · Humidifiers · Gas stoves · Fans · Vacuum cleaners · Lighting equipment · Dish dryers · Electric toilet seats · Phones · Toasters · Fan heaters · Electric hot water pots · Baby's chair · Massagers · Food processors · Juicers · Sowing machines · Radios · Oil stoves	¥600	
Rugs · Bicycles · Suitcases · Skis · Snowboards · Ski /snowboard boots · Snow pushers · Speakers · Tatami(smaller than 1 jo) · Desks/tables(each side must be shorter than 90cm) · Wardrobes(height+width must be shorter than 200cm) · Electric blankets · Microwaves, · Futon · Urethane form mattresses · Video players(DVD, CD) · Baby strollers · Yoshizu(bamboo shades) · Printers	¥850	
Glasses · Potteries · Wood ashes(about 30L for each bag)	¥1000	
Motorcycles · Wheelchairs · Single sofa(with coil spring inside) · Dish washers · Stereo system components(desktop type) Bathroom basin cabinets · Tatami(1jo) · Wardrobes(height+width must be shorter than 350cm) · Desks/tables(with a longer-than-90cm side) · Electric carpets · Kitchen sinks · Beds(excluding mattress) · PC · Displays(with TV tube) · Magnetic mattresses	¥1600	
Organs/electric pianos · Massage chairs · Sofas(with spring coils) · Water heaters · Double-sized mattresses(with coil spring inside) · Electric wheelchairs · Electric hospital bed · Small fireproof banks	¥4200	
Wood chips · Green wood(per 1m ³)	¥4800	
Waste plastics · Plastic mulch(per 1m ³)	¥7200	
All of the above together(per 1m ³) ★	¥7200	
 Tires only for normal-sized car use	¥300	
	for medium-sized car use	¥1200
	for large-sized car use	¥2400
 Tires with wheel for normal-sized car use	¥360	
	for medium-sized car use	¥1800
	for large-sized car use	¥3600



*For items with non-metal parts such as small-scale home appliances, the payment is required. However, Hakuba Sanroku Clean Center accepts small-scale home appliances for free.

*For items not shown above, the fees for similar items will be applied.

*Prices shown above are for one piece

*Un-sorted wastes will be applied ¥7200 per 1m³ ★

Kita-Alps Eco Park in Omachi Accepts Burnable Bulky Waste Tel: 0261-85-5311

【Acceptable items】 Futon, carpets, furniture, weeds, logs, plastic items.

【Size】 Logs: thicker than 5cm in diameter, longer than 180cm in length

Furniture, etc.: With parts thicker than 5cm in diameter or thickness





When you cut those items into pieces (shorter than 50cm in length, thinner than 5cm in diameter/thickness) and put them into "burnable garbage bag," you can take them out as "burnable garbage."

【Fee】 ¥200 per 10kg

Tax Payment Calendar for FY 2019

Local tax calendar for FY 2019 is as follows. Please pay each installment no later than the deadline mentioned below. For those who are using the direct debit service, taxes will be withdrawn from your account on each deadline day. Please confirm your account balance to ensure a smooth transaction. Your cooperation will be highly appreciated.



Hakuba Tax Payment Calendar of FY2019				
Tax Item Deadline	Resident Tax (Sonkenmin-zei) 住民税	Fixed Assets Tax (Koteishisan-zei) 固定資産税	Light Motor Vehicle Tax (Keijidousha-zei) 軽 自動車税	National Health Insurance Tax (Kokumin-kenkou hoken-zei) 国民健康保険税
April 25, 2019	—	①	—	—
May 27, 2019	—	—	①	—
July 1, 2019	①	—	—	①
July 25, 2019	—	②	—	②
August 26, 2019	②	—	—	③
September 25, 2019	—		—	④
October 25, 2019	③	—	—	⑤
November 25, 2019	—	—	—	⑥
December 25, 2019	—	③		⑦
January 27, 2020	④	—		⑧
February 25, 2020	—	④		⑨
March 23, 2020	—	—	—	⑩

For inquiries: Taxation Division (Hakuba Village Office) TEL: 0261-85-0712

REMINDER

Coming Deadline for Local Taxes・Services

Apr 25
Thu

1st Installment

Fixed Assets Tax

April bill

Water and Sewer



Payment method

	Local Taxes	Water and Sewer
Cash (Village office/Bank)	○	○
Cash (Convenience store)	---	○
Direct Debit	○	○
Credit Card(online)	○	---

For inquiries: Taxation Division TEL: 0261-85-0712 Water and Sewer Division TEL: 0261-85-0714



Hakuba Village Official English Homepage
<http://www.vill.hakuba.lg.jp/eng/>



Follow our Facebook page to have the up-to-date announcements of the village office!
<https://www.facebook.com/hakuba.lg.jp/>

